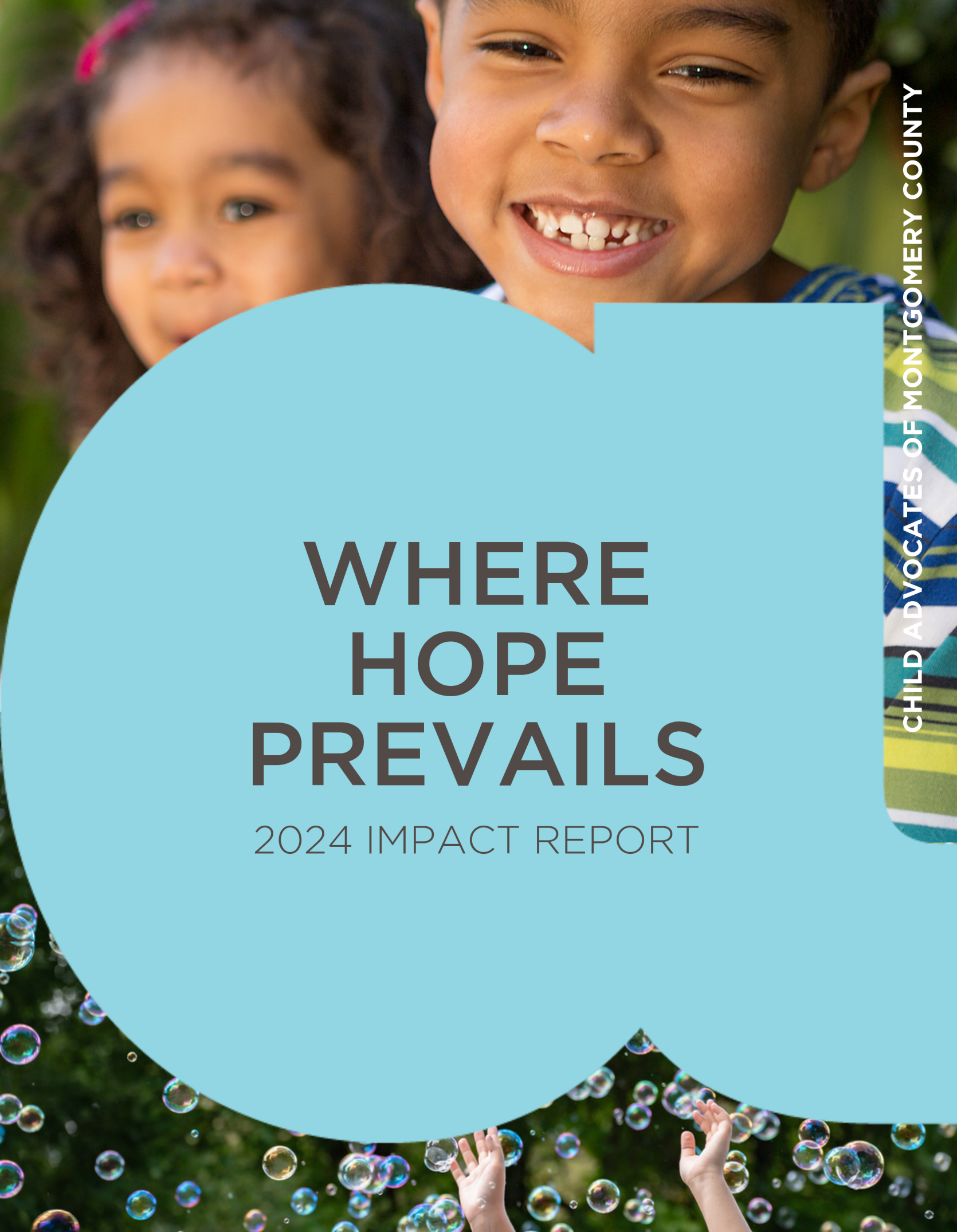


WHERE HOPE PREVAILS

2024 IMPACT REPORT





Child Advocates of Montgomery County stands at the intersection of compassion and circumstance to provide hope for the most vulnerable children and families in our community. We provide support, knowledge, and guidance 1) for prevention through community education, and 2) through volunteer advocacy, for every child we serve.

OUR MISSION

Child Advocates of Montgomery County empowers vulnerable children through volunteer advocacy and strengthens their family and community with education, so they can flourish in a safe, nurturing environment.

OUR VISION

Our vision is a connected community where children and families thrive, and together we work to eliminate childhood trauma, abuse, and neglect.

CONTENTS

President's Message	3
Impact of ACEs	4
Children at Risk	5
Resilience-Focused Approach	6
Science of Hope	7
Programs	8
Children Served & Volunteers	12
Statement of Activities	16
Fund Development	17
How You Can Help	18





PRESIDENT'S MESSAGE

As I reflect on the past year, I am filled with immense pride and gratitude for the work we have accomplished together. June 2025 marks a truly extraordinary milestone for Child Advocates of Montgomery County: ten solid years of serving 100% of children involved in the child welfare system in our county with a dedicated volunteer Advocate. This achievement is not only a testament to our commitment but also a shared celebration of the community's unwavering support for the most vulnerable children among us.

We have also made significant strides in expanding our programs to reach even more children in need. Both our Justice-Involved Youth Advocacy Program and our Educational Advocacy Program have progressed beyond the pilot phase and are now in their second year of operations. These programs represent critical steps forward in addressing the unique challenges faced by justice-involved youth and supporting educational outcomes for children across our county. However, to continue growing and fully realize the potential of these programs, additional funding is essential. We are seeking new opportunities through grants, foundations, corporate gifts, and individual donations—both cash and non-cash support—to ensure their future impact.

Meanwhile, our Community Education Division continues to flourish, making a meaningful difference far beyond our county lines. In 2024, our organization was recognized as a Trust-Based Relational Intervention® (TBRI®) Ambassador Program by the Karyn Purvis Institute of Child Development. Our Community Education Division trained over 4,000 individuals in TBRI®, including approximately 2,900 teachers across nine Montgomery County schools. The ripple effect of this work is extraordinary, with tens of thousands of children potentially benefiting from the knowledge and strategies these educators now hold.

Financial responsibility remains a cornerstone of our operations. Our financial stability not only reflects our dedication to accountability but also ensures our ability to continue serving children and families in crisis while exploring new avenues for growth.

None of this work would be possible without you. Whether you are a donor, board member, volunteer, or simply someone who shares our passion for advocating for children, your support is a beacon of hope. You help us build a legacy of healed children and families, and for that, I cannot thank you enough.

As we continue to extend our advocacy work, I invite you to stay connected, share our mission, and join us in envisioning an even brighter future for the children of Montgomery County. Together, we are making lasting change, one child and one family at a time.

With deepest appreciation,

Ann Marie Ronsman, MSN, RN, TBRI® Practitioner
President & CEO



THE IMPACT OF ACES & TOXIC STRESS IN CHILDREN

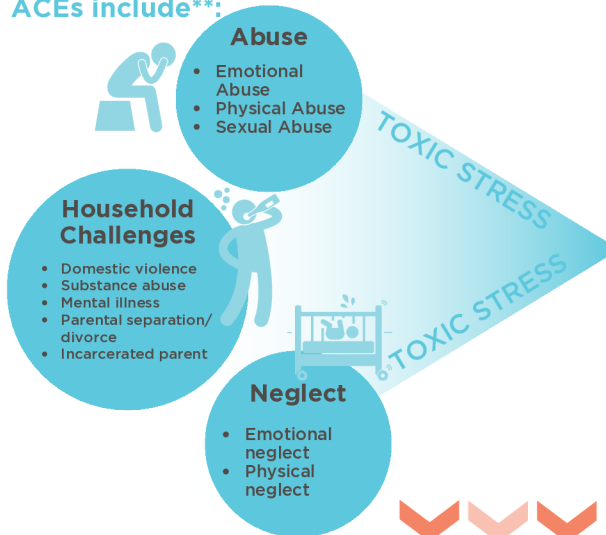


Scan to watch ACEs lifetime impact explanation TEDMED video by Dr. Nadine Burke Harris

Adverse Childhood Experiences (ACEs) and Toxic Stress

Difficult circumstances that can have negative, lasting effects on health and wellbeing

ACEs include**:



Stress Response*:

The stress response is our body's natural reaction to stressful events. Our stress response is there to protect us from potential danger.



Toxic Stress Response*:

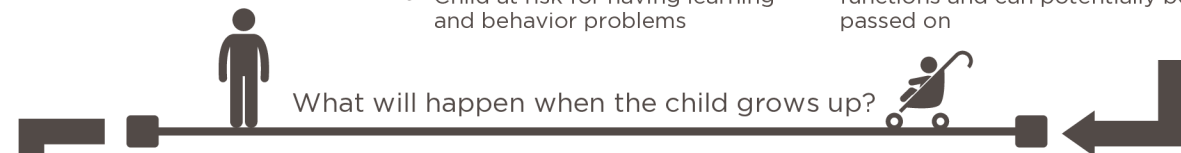
In response to this prolonged exposure to toxic events (ACEs), the child's body produces a severe stress response that lasts for an extended period of time.

Over time, the stress hormones begin to tear down the body's organs and immune system in such a way that a child may develop severe, chronic health problems as an adult.

Consequences of Toxic Stress*



- Causes fear centers of the brain to significantly increase in size
- Child can develop symptoms very similar to post-traumatic stress disorder (PTSD)
- Decreases size and impairs functioning of regions of the brain responsible for learning, memory, and executive functioning
- Child at risk for having learning and behavior problems
- Immune system suppressed
- Child at risk for developing chronic, lifelong health conditions
- DNA is changed
- Gene expression affects bodily functions and can potentially be passed on



FOR ADULTS WITH 4 OR MORE ADVERSE CHILDHOOD EXPERIENCES (ACEs)**:

3X the levels of lung disease and adult smoking



11X the level of intravenous drug abuse



14X the number of suicide attempts



4X as likely to have begun intercourse by age 15



4.5X more likely to develop depression



2X the level of liver disease



"Adverse childhood experiences are the single greatest unaddressed public health threat facing our nation today."

Dr. Robert Block, former President of the American Academy of Pediatrics



CHILDREN AT RISK

~60%

Percentage of children who have experienced at least one ACE by the age of 16.

1 in 4

adults in the U.S. are estimated to have experienced 3 or more ACEs.

<1%

Percentage of children who have experienced ACEs who are removed from their home to enter foster care. The majority of children who experience trauma (>99%) are without care or support.

8 of 10

of the leading causes of death in the U.S. are correlated with a high ACEs score.

19

In years, the average shortened lifespan of adults with 6 or more ACEs.

20%

of the country's youth in care become homeless immediately upon aging out of the child welfare system. Nationwide,

50%

of the homeless population spent time in foster care.

Youth who experience multiple foster care placements are more likely to struggle academically and socially, increasing their likelihood of truancy and eventual justice system involvement.

50%

of youth in the juvenile justice system have a history of involvement with child welfare services.

70%

of youth who exit foster care as legal adults get arrested at least once by the age of 26.

20%

of the prison population in the U.S. is comprised of children formerly in foster care.

70%

of youth arrested in the U.S. each year have a mental health condition.

52%

In a study of youth involved in the juvenile justice system, percentage who reported at least 4 ACEs.

32%

reported 5 or more.

75%

Re-arrest rates of youth within three years after confinement within a juvenile justice facility.

Children in foster care are

2X

as likely to be suspended or expelled from school compared to their peers.

Students arrested in the 9th and 10th grades were

6-8X

more likely than non-arrested students to drop out of high school, and **3.5 times** more likely to drop out in grades 9 and 10.

Chronic absenteeism (*missing a significant portion of school days, typically defined as 10% or more of the enrolled school year, for any reason*) in Montgomery County school districts rose from 10.7% in 2018-19 to 18.7% in 2022-23 (a 75.7% increase), reflecting a post-COVID national trend.



THE IMPACT OF A RESILIENCE-FOCUSED APPROACH

Using a Resilience-Focused Approach to Help Children Overcome the Effects of Toxic Stress

Children can heal from the effects of toxic stress if they develop healthy relationships with caring, reliable, safe, compassionate adults who guide them through the healing process.

Protective Factors**:

The presence of PROTECTIVE FACTORS can often mitigate the consequences of ACEs/toxic stress.



Developing Resilience and Empathy**:

Adults can help children heal from their adverse experiences by helping children build...



Trust-Based Relational Intervention (TBRI®)

- CONNECTING**
Incorporates Mindfulness and Engagement Strategies
- EMPOWERING**
Incorporates Ecological and Physiological Strategies
- CORRECTING**
Incorporates Proactive and Responsive Strategies

Supportive Care:
A holistic approach that recognizes the widespread impact of toxic stress on individuals and systems, aiming to create safe, supportive, and empowering environments that promote healing and resilience.

LEARN MORE ABOUT ACES, TOXIC STRESS, AND TBRI®

TOXIC STRESS & THE BRAIN



Watch to learn more about the complexity of the human brain, the impact of Adverse Childhood Experiences, and the hope for healing in trust-based relationships.

IMPORTANCE OF ATTACHMENT



Learn how important attachments are in helping children learn to trust caring adults.

TBRI® OVERVIEW

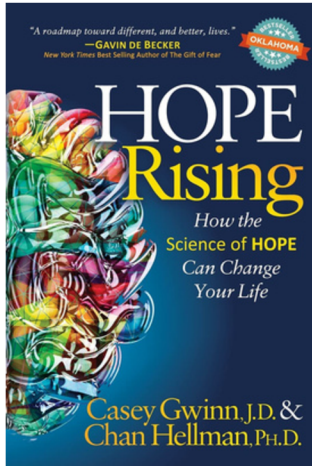


What is TBRI®? This video resource helps to answer that very question.

IDEAL RESPONSE©



Learn how TBRI®'s IDEAL Response© helps caregivers navigate challenging behaviors and build stronger connections with children from hard places.



THE SCIENCE OF HOPE

The science of hope demonstrates that hope is measurable and has the power to change lives. **Unlike a wish, which is a passive desire for something to happen, hope is an active belief in a better future, coupled with the determination and pathways to achieve it.** This distinction is critical, as hope involves actionable steps and resilience, while a wish lacks the intentionality to create change.

Research has shown that **hope is not just an abstract concept but a measurable and malleable trait** that can be cultivated through intentional actions and choices.

Statistics underscore the profound impact of hope on individuals and communities.

Studies reveal that higher levels of hope are linked to:

- **Improved mental health**
- **Greater resilience**
- **Better academic and professional outcomes**

For example, individuals with high hope scores are more likely to:

- **Overcome adversity**
- **Achieve their goals**
- **Maintain a positive outlook on life**

Hope has also been shown to play a critical role in recovery from trauma, as it fosters a sense of purpose and connection, enabling individuals to rebuild their lives.

The **Hope Score**, developed as part of the framework outlined in *Hope Rising: How the Science of Hope Can Change Your Life* by Casey Gwinn and Chan Hellman, **provides a tool to measure an individual's level of hope.** It assesses factors such as goal-setting, pathways thinking (the ability to identify ways to achieve goals), and agency (the motivation to pursue goals).

Hope Rising emphasizes that hope is particularly vital for vulnerable populations, including children from hard places. **Child Advocates of Montgomery County volunteer Advocates began using the Hope Score tool on qualifying cases in early 2025.** By fostering hope, Advocates can help children and families envision a brighter future and take steps toward achieving it. The Hope Score tool serves as a practical resource for assessing and increasing hope, empowering individuals to navigate challenges and thrive.

LEARN MORE
ABOUT THE
SCIENCE OF
HOPE



Watch this TEDx Talk
about the science and
power of hope featuring
Dr. Chan Hellman

GET YOUR HOPE
SCORE



Scan the code to get
your Hope Score

LEARN MORE ABOUT
CHILD ADVOCATES'
USE OF THE HOPE
SCORE TOOL



Watch this video
featuring President
and CEO Ann
Marie Ronsman



A STRONG FOUNDATION

It all started with eight volunteers. Eight people who saw a need in Montgomery County and rose to the occasion. Thanks to their tireless dedication and the endless hours of work put in by those who came after, Child Advocates of Montgomery County is now more than 250 volunteers strong.

33 years

Number of years Child Advocates has been serving Montgomery County children and families

100%

of the children in the custody of DFPS were served by Child Advocates of Montgomery County in 2024

10 years

The number of consecutive years Child Advocates has served every single child in foster care

10,600+

Number of children served by Child Advocates of Montgomery County since 1992

OUR PROGRAMS

Volunteer Advocacy for Children

100% of the children served by volunteer Advocates are children and youth from “hard places.” Advocates provide valuable information and assistance to help ensure a child’s best interests are met.



CHILD WELFARE ADVOCACY:

Court Appointed Special Advocates® (CASA) supporting children in foster care whose families are involved in the child welfare system

JUSTICE-INVOLVED YOUTH ADVOCACY:

Court Appointed Special Advocates® (CASA) supporting youth involved in the juvenile justice system



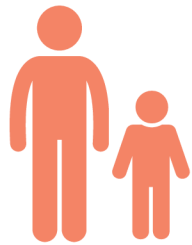
EDUCATIONAL ADVOCACY (Truancy Prevention):

Volunteer Advocates supporting youth struggling with school attendance or participation

Advocates stay by a child’s side and remain a consistent presence throughout each case.



2024: IMPACT OF CHILD ADVOCACY



215
Volunteer
Advocates



177,137
Miles Driven in
Service to Children



15,868
Volunteer Hours
Served

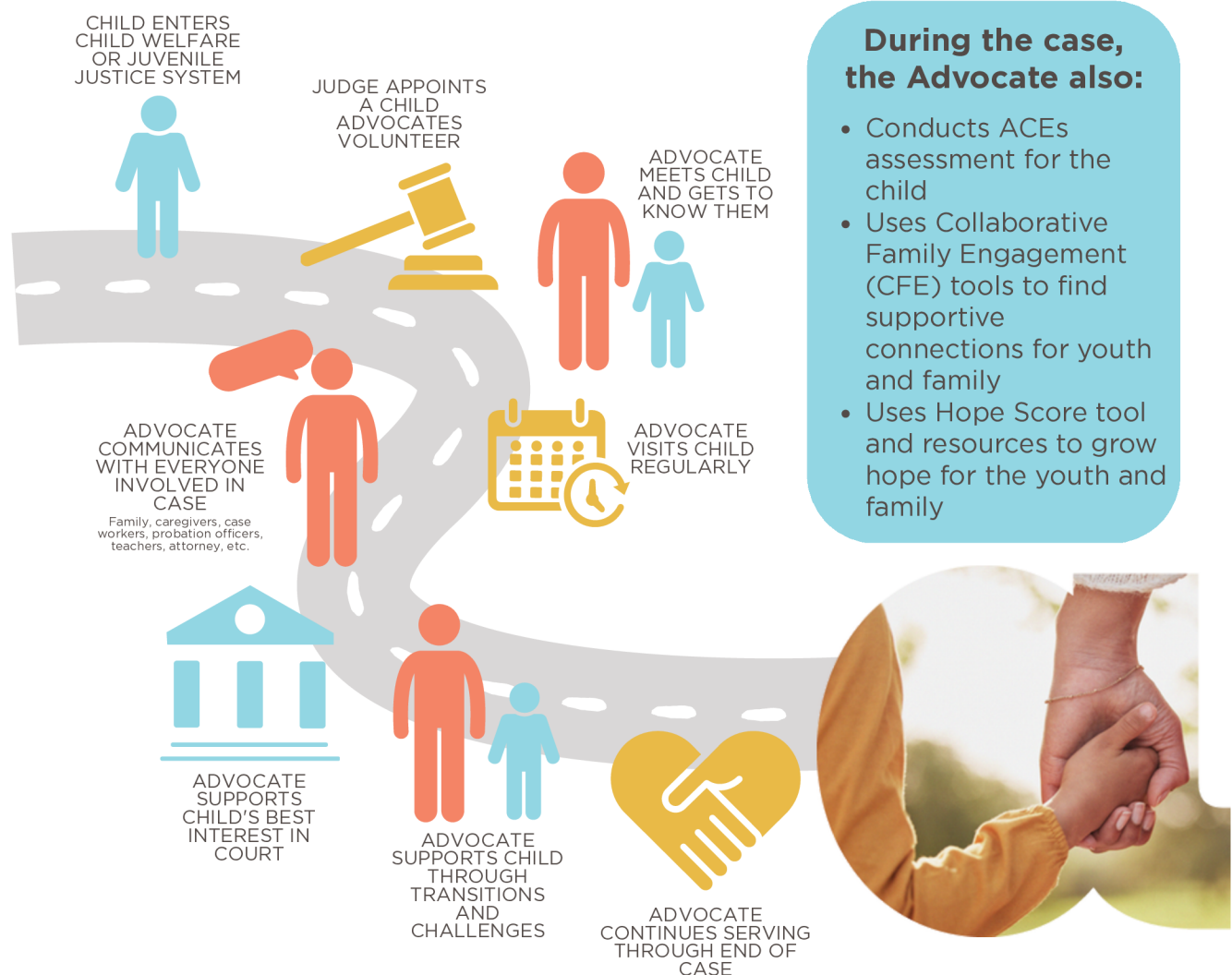


380
Children's Lives
Changed

Based on data collected 11/1/23-10/31/24 | Child Welfare, Justice-Involved Youth, and Educational Advocacy Programs

WHAT DO COURT-APPOINTED ADVOCATES (GUARDIANS AD LITEM) DO?

In Child Welfare or Justice-Involved Youth Cases





OUR PROGRAMS

Prevention Services

COMMUNITY EDUCATION:

Child Advocates of Montgomery County's Community Education Division focuses on prevention services by providing training, coaching, and resources to various groups, including parents, caregivers, schools, government agencies, businesses, and nonprofit organizations. Both community training and individualized coaching cover crucial topics such as **Understanding Children from Hard Places** and **Trust-Based Relational Intervention® (TBRI®)** as well as a specialized curriculum on **Child Trafficking and Exploitation Prevention**. These programs aim to equip community members with the knowledge and tools needed to support vulnerable children.



2024: IMPACT OF COMMUNITY EDUCATION



Total Individuals Trained **4,520**



Total Schools Involved

9



Total Teachers Trained

2,879



Total Child-Placing Agencies Trained

2



Total Foster Parents Trained

183



Total Families Coached

79

TBRI® Efforts & Accomplishments

Individualized Coaching Cases

- 79 individualized coaching cases
- 255 hours of coaching provided in 200 completed sessions
- Outreach at CCL3 reached 27 families and 47 children through community engagement
- **190 children impacted**

Conroe ISD

- Completed training for the CISD Foundations Team (initiated mid-2023)
- Provided training at Bush Elementary, Anderson Elementary, and CISD Police Department

New Caney ISD

- Trained staff at Oakley Elementary, as well as district and campus leaders
- Launched a pilot school program in three schools
- Conducted a parent night at Oakley, offering training in both English and Spanish

CASA Programs

- Hosted a training for CASA San Diego
- Hosted 10 Lunch & Learn virtual trainings for Montgomery County Advocates and six CASA programs previously trained (2022-2023)

Additional Training

- Tomball Regional Health Foundation's community partners, the DRC, and the Texas Association of Mediators

Community Engagement & Events

- Provided a full TBRI® Intro & Overview community training at Generations Church
- Conducted five TBRI® Community Night trainings (virtual and in-person)
- Held eight Greater Houston Collaboration meetings (virtual and in-person)

Based on data collected 11/1/23-10/31/24 | Community Education Division



OUR PROGRAMS

Prevention Services

EDUCATIONAL ADVOCACY & TRUANCY PREVENTION:

The Educational Advocacy Division offers prevention services through the efforts of Student Success Advocates (SSAs). SSAs are designated by schools or chosen by parents to assist youth who are facing challenges with school attendance or participation. By providing targeted support, SSAs help students overcome barriers to their education, ensuring they have the opportunity to succeed academically and personally. This division plays a vital role in addressing the educational needs of at-risk youth and fostering a supportive environment for their growth and development.



WHAT DO STUDENT SUCCESS ADVOCATES DO?

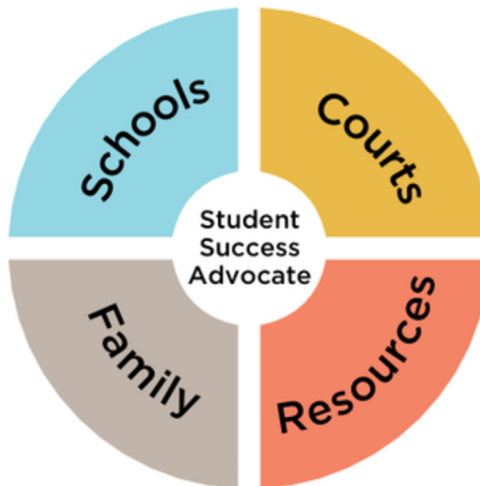
In Truancy Prevention/Educational Advocacy Cases

Schools

- Reinforces school objectives
- Encourages attendance
- Conducts school visits
- Supports parent participation
- Reviews student's progress to identify special needs

Family

- Gets to know the family
- Conducts home visits
- Sets student and family goals
- Builds support network
- Helps navigate school system
- Connects with resources



Courts

- Encourages attendance
- Updates court on student's progress
- Accompanies family to court
- Encourages completion of court-ordered services

Resources

- Builds a relationship with community partners
- Identifies resources for family
- Refers family to resources
- Helps family complete any paperwork

During the case, the Advocate also:

- Uses Collaborative Family Engagement (CFE) tools to find supportive connections for youth and family
- Uses Hope Score tool and resources to grow hope for the youth and family

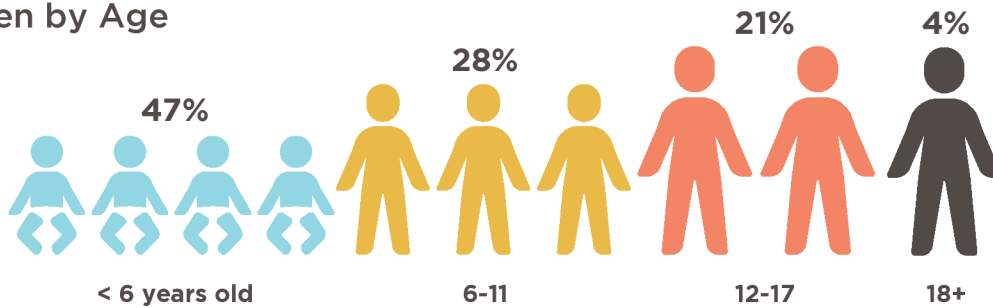




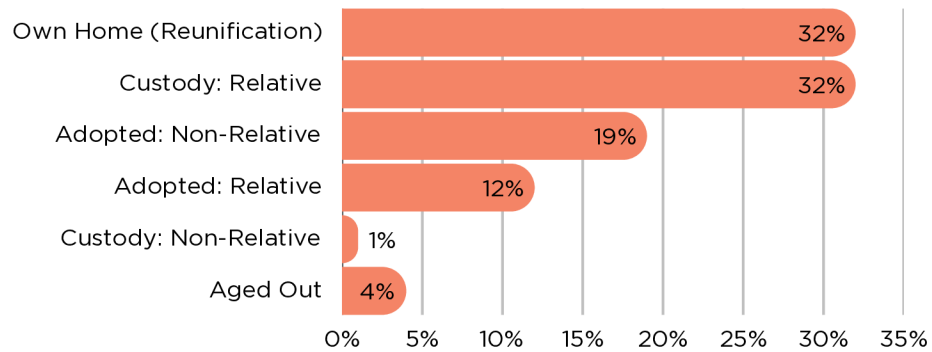
CHILDREN SERVED

570 Children's Lives Directly Impacted*

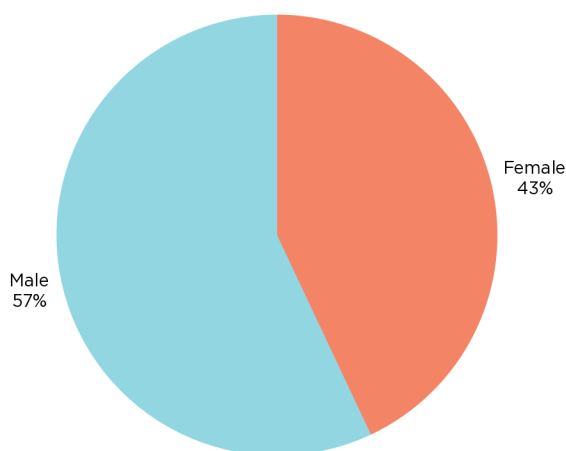
Children by Age



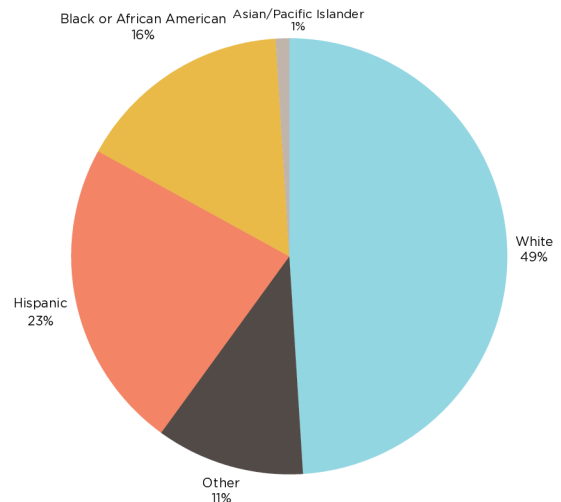
Placement of Child at Close of Case (Child Welfare)



Children by Gender



Children by Race & Ethnicity



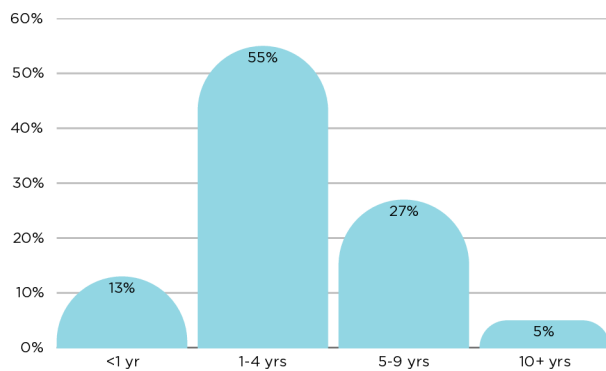
*Based on data collected 11/1/23-10/31/24 | Child Welfare, Justice-Involved Youth, and Educational Advocacy Programs; Community Education Division-Individualized TBRI® Coaching



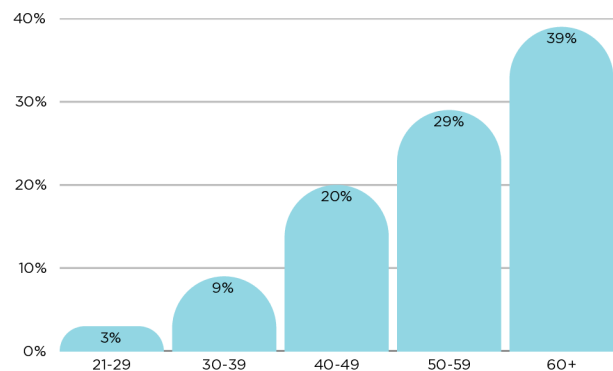
VOLUNTEER ADVOCATES FOR CHILDREN

215 Active Volunteer Advocates*

Volunteers by Years of Service



Volunteers by Age



WHO VOLUNTEERS TO BECOME A CHILD ADVOCATE?

Child Advocate volunteers are everyday people—teachers, businesspeople, retirees, stay-at-home parents, and grandparents—who are committed to making a difference for children and families. We invite you to meet three incredible Advocates for children--Heather, Corey, and Vanessa. In each spotlight below, they share personal stories of how they support and make a difference in the lives of vulnerable children in our community.

Meet Volunteer Advocate Heather Lease



Meet Volunteer Advocate Corey Mark



Meet Volunteer Advocate Vanessa Temporetti



*Based on data collected 11/1/23-10/31/24 | Child Welfare, Justice-Involved Youth, and Educational Advocacy Programs

ADVOCATES BY YEARS OF SERVICE

10+ YEARS

Cheryl Baehr
Julie Brown
Heather Cabanas
Elizabeth Chapman
Susan Munkres
Leszlie Nedelka
Susan Olver
Carol Seltz
Tammy Sisson
Charlotte Tabarini

5-9 YEARS

Kayla Adams
Caroline Austin
Megan Behan
Ree Belhumeur
Julie Black
Audrey Blythe
Kirsten Bubier
Kathy Butler
Pam Byrne
Martti Cade
Randall Cade
James Cain
Jesus Campos-Garcia
Ashling Casey
Sally Cline
Marie Colborn
Joni Cope
Steven Crooke
Rachel de Groot
Sandra Dresch
Debra Drumm
Diana Ender
Ron Finch
Mark Fincher
Katherine Fitzgerald
Sherri Forschler
Monica Hague
Randolph Hansen
Kimberly Hart
Jennifer Hearne
Mary Kay Hinkle
Margaret Hollinger
Destin Hudek
Stephanie Jones
Rebecca Koterwas
Colette Krieps
Ingram Lee
Paula Logan
Michelle MacLean
Corey Mark
Margaret Martin
Kimberly Marvel
Nancy McCulloch
Kashonna McHenry
Sonia Miller
Leslie Mills
Katherine Orr
Cari Otto
Melissa Reese
Patrick Riley
Kristie Ruffer
Susan Sharp
Charlotte Tabarini
Linda Ulrich
Paul Vallone

5-9 YEARS CONTINUED...

Jeanne Walker
Meredith Wedin
Kelley Wolf
Ellen Zampello

1-4 YEARS

Tamara Adams
Angelina Albert
Shannon Altieri
Diana Anderson
Kathleen Baldwin
Lacey Bankhead
Janice Barchie
Kristalynn Barre
Michelle Bayne
Ann Beetz
Tina Berilgen
Leah Bertsch
Demetria Borges
Stephanie Bowie
Ginny Bowles
Saundra Bradley
Laura Branson
Christina Brock
Dee Brown
Kimberly Brown
Merrilee Brown
Elizabeth Bryan
Cynthia Burleson
Deb Carpenter
Alice Carstens
Carolina Carvajal
Jason Chavers
Rebecca Clausi
Tana Clemens
Dan Conway
Laura Conway
Paul Cox
Amanda Crepin
Deborah Crespo
Michael Crosby
Tenille Crosby
Sharon Daniels
April Davis
Denise DeGeare
Keri DesAutels
Dempsey Doyle
Jacqueline Eakins
Gregg Edelmann
Jennifer Englebretson
Neftali Estrada
Paolina Fasula
Ashley Fehrle
Edward Felman
Linda Fiato
Karen Flink
Hadra Garraty
Christina Giglotti
Taryn Gordon
Lysa Hamaker
Gretchen Harper
Anne Heiberger
Megan Hershfeld
Joy Hesselgrave
Janice Hewett
Mary Honeycutt

1-4 YEARS CONTINUED...

Allison Hunnicutt
Susan Izard
Matthew James
Robert Jefferis
Bryan Johnson
Latenzia Juneau
Allison Kerbow
Michaela King
Ryan Krone
Heather Lease
Holly LeFevre
Mary Levesque
Shanna Lohr
Jessica Lorant
Jerry Mackey
Kay Martin
Kaylei McGarrett
Loree McOwen
Jamie Meche
Vincent Messimer
Kevin Montagne
Randall Moravec
Amy Nobles
Jackie Nolen
Christina Nordstrom
Oluchi Nwankwo
Majella O'Brien-Flaherty
Paula Piecyk
Peggy Pierucci
Zahir Poonawala
Christy Prozzoly
Shannon Regan
Kurt Remington
Karen Roberts
Jan Rosman
Marcia Russo
Joy Sandwich
Elizabeth Sargent
Hiroko Schyvincht
Karpoor Shashidhar
Debra Shay
Dee Sherwood
Erin Smith
Malinda Stewart
Matthew Sutherland
Susan Talbot
Karen Thorpe
Peggy Thurman
Marjan Torrie
John Tumelson
Amanda Usry
Danny Valdez
Eva Vigh
Sholly Walker
Theresa Walker
Anne Weathersby
Jill Wegner
Maria Weller
Sandra West
Elizabeth Wick
Debra Wilson
Jan Zarembo-Smith

<1 YEAR

Karen Atchley
Christine Bergsrud
Charmayne Brown
Stacy Burton
Katia Carmona
Demetrich Carrington
David Carroway
Carrie Culberson
Maria Dean
Patricia Debrow
Erin Fife
Sharon Galvan
Catherine Johnson
Sally Kathmann
Beth Lee
Deanna Mathieson
Guy Munster
Ennis Osteen, II
Jacob Robles
Margaret Shanheen
Deidra Sherman
Janessa Smith
Leah Stewart
Vanessa Temporetti
Andreas Tjavaras
Nicole Williams
Heather Wyatt
Maria Zepeda

ADDITIONAL VOLUNTEERS & GROUPS

Karen Cahill
ChampionX
Kimberly Degnan
Pat Fain
Janice Goehring
Taryn Gordon
Lisa Henthorn
Tiffany Johnson
Junior League of The
Woodlands
Carol Knott Tefft
Jamey Kuhn
Kaylei McGarrett
Aileen McGrath
Connie McNabb
Bailey Miller
NCL-Bluebonnets
NCL-Magnolias
NCL-The Woodlands
Christina Robbins
Cheryl Sellers
Shawn Sellers-Roege
Jeana Sublett
Stephanie Taylor
Jeanne Toth
Colleen Waymel

Scan the code to
learn more about
volunteering:



Based on data collected 11/1/23-10/31/24



BOARD AND STAFF

2024 Board of Directors

Mark Freeman

Board Chair
ProDirectional

Christina Meineke

Board Vice Chair
EnerCorp

Julie Barrett

Secretary
Texas Children's Hospital

Katie Beatty

Treasurer
Kinsman

Brian Albert

Kean Miller

Marcella Herrera

Canopy Cancer Survivorship Center
at Memorial Hermann

Catherine Miller

Brit Benko

Huntsman Corporation

Jason Howze

Woodforest National Bank

Tamika Taylor

Conroe Independent School District

Travis Guinn

The Howard Hughes Corporation

Justin Lime

Affordable Concrete of North Houston

Zachary Williams

Baker Hughes

Paul Mahoney

ChampionX

Child Advocates of Montgomery County Staff

President and CEO

Ann Marie Ronsman

Director of Development

Lindsay Miller

**Senior Director of Programs
and Services**

Camille Davis

**Director of Communications
and Engagement**

Alli Stephens

**Lead Training & TBRI®
Community Education
Specialist**

Francine Stanfield

**Lead Advocacy Specialist:
Child Welfare**

Sol O'Leary

**Assistant Director of
Communications**

Erica Avedikian

**Training & TBRI® Community
Education Specialists**

Juliann Blane
Julie Brown

**Lead Advocacy Specialist:
Educational Advocacy**

Kristy O'Neal

Lead Outreach Specialist

Shellie Tyrrell

Community Educators

Taryn Gordon
Jennifer Reitmeyer
Karen Vegas

**Lead Advocacy Specialist:
Justice-Involved Youth**

Mike Quinn

**Operations & Program
Specialist**

Stacey McDowell

Quality Assurance Specialist

Marilyn McQueeney

Advocacy Specialists

Ashling Casey
Allison Conner
Linda Fiato
Rosa Hoadley
Rosario Salinas
Katie Wamhoff
Victoria Warmuth

Accounting Specialist

Laura Sanchez

Programs Support Specialist

Martha Hoffman





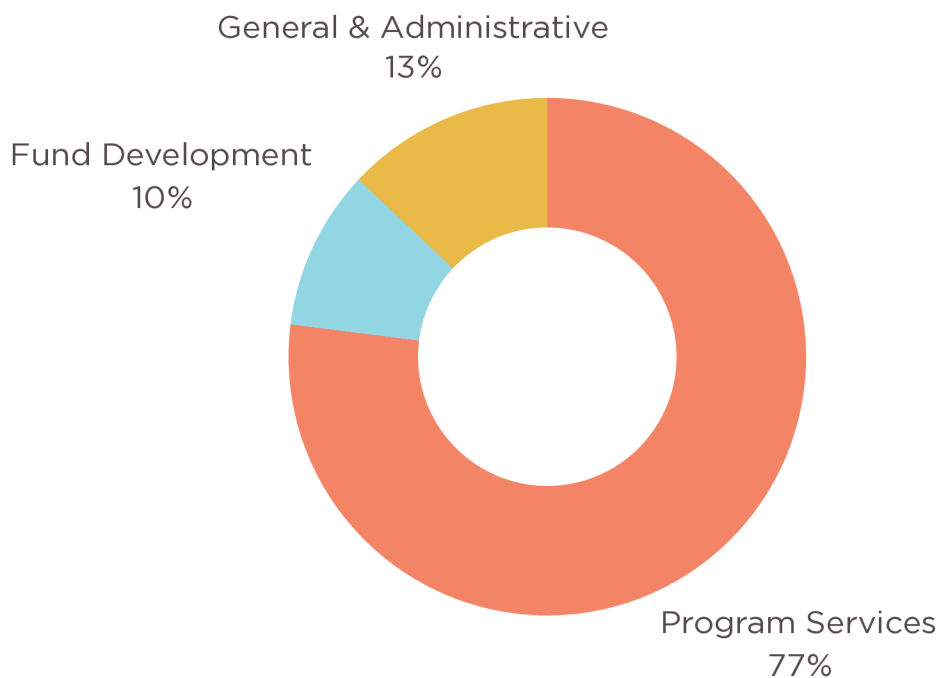
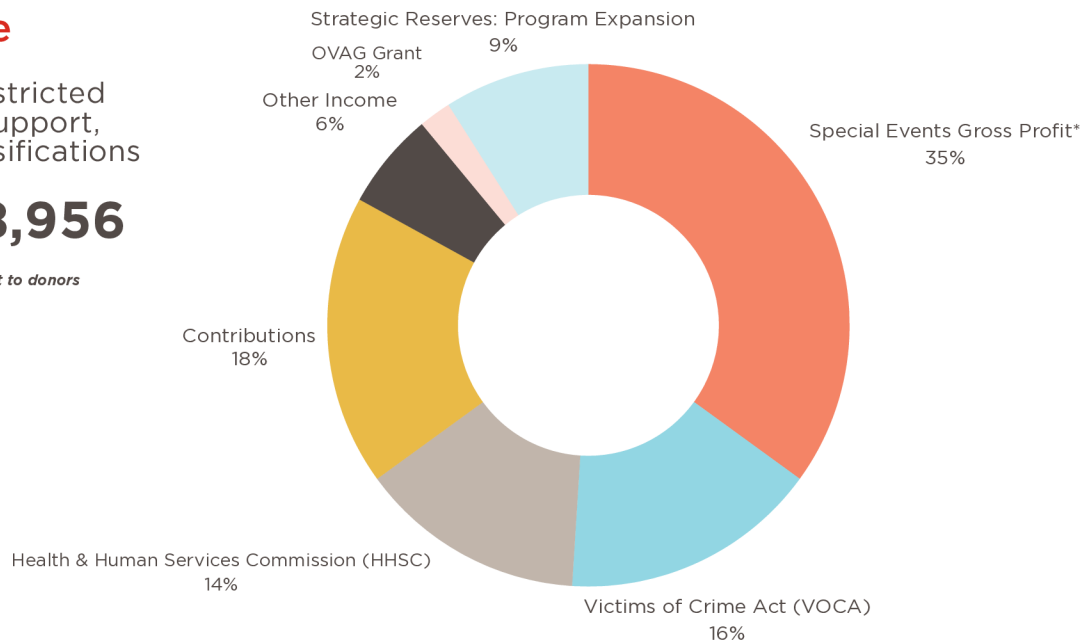
2024 STATEMENT OF ACTIVITIES

Revenue

Total unrestricted revenue, support, and reclassifications

\$2,218,956

**Net of direct benefit to donors*



Expenses

Total

\$2,218,956

Net assets 10/31/24

Based on financial data collected 11/1/23-10/31/24





FUND DEVELOPMENT



2024 CASA SPEAKS FOR KIDS GALA

29th Annual Child Advocates Gala

Presented by

Huntsman Corporation

Visionary

The Conlon Family & Friends
EnerCorp
Rich & Annette Haut
The MJ Foundation

Hope in Action Donors

Mike & Nancy Quinn

Insider

Dave & Jo Ann Bartlow
Bayside Printing
Best Friends of CASA
CASA Strong
ChampionX
Chesmar Homes
Friends of CASA
The Streifel Family
Foundation
Ray & Colleen Waymel

Benefactor

Bill Day Photography
Crash Champions
Empyrean
EnerCorp
Pat Fain & Chris Goehring
Gator Technologies
H-E-B
Holcim
The Howard Hughes
Corporation
Lester & Stephanie Jones
Carol Knott Tefft, RE/MAX
Integrity The Hometown Team
Eric & Heather Lease
Clay & Elissa McCollor and Mark
& Catherine Miller
Memorial Hermann The
Woodlands Medical Center
Orangetheory Fitness Conroe
Right Fence Co.
John & Laurie Schoepf
Scott Law Firm
Texas Children's Hospital The
Woodlands
Truluck's and White & Mejias
Law Firm
Woodforest National Bank

Underwriters

Waste Connections
ProDirectional
Subsema
Chicago Title
Rock Jensen Foundation
Bayside Printing
Abaco Drilling Technologies, Anew
Chiropractic, The Coombs Family
Foundation: Paul & Sallie Coombs, James
& Angie Ebrey, Express Family Clinic,
Fitness Project, GTIN, H-E-B, Rob &
Christine Johnson, Judge Wayne L.
Mack, Sewell Automotive Companies

2024 Cornament

Presented by
Chesmar Homes



Party Deck Sponsor

EnerCorp

Custom Toss Bag Sponsor

Kingdom Luxe
Travel

Eats and Treats & Swag Bag Sponsor

Carol Knott Tefft - RE/MAX Integrity The
Hometown Team

Board Sponsor

The Howard Hughes
Corporation

Cornado Sponsors

Abaco Drilling Technologies
Right Fence Co.
Truluck's

Ringer Sponsors

America's ER
Fitness Project
ProDirectional
Waste Connections

Prize Sponsor

Woodforest National Bank

Underwriters

B-52 Brewing Co.
Kuhn's Custom Cornhole
The Lake Life Concierge
Lone Star Parties
Truluck's



Third-Party Fundraising Events

*Purse Bingo at Sawyer Park Icehouse
Dutch Bros. Give Back Day
Hunger Crush Cafe Give Back Event
Kendra Scott - Kendra Gives Back
Waste Connections Charity Classic for Kids*



HOW CAN YOU HELP CHILDREN AND FAMILIES IN CRISIS?

GIVE A CHILD HOPE TODAY.

Every day in our community, children and families suffer from the effects of trauma, abuse, and neglect. You can ensure they have someone by their side to provide the support they need.

GIVE TIME

<p>Become an Advocate</p>  <p>About 1-2 days per month (after initial training)</p>	<p>Become a volunteer</p>  <p>Various volunteer commitment based on the event or service project</p>	<p>Follow and share on social media</p>  <p>A few minutes... Tell your friends about us!</p>
--	---	---

GIVE TALENTS

<p>Join a committee</p>  <p>Help plan fundraising events (1-3 meetings each quarter).</p>	<p>Invite us to speak</p>  <p>You make the ask/connection, and we'll coordinate the rest!</p>	<p>Host a toy or book drive</p>  <p>Add new toys to our toy room or books for our library for Advocates to give to the children they serve.</p>
---	--	--

GIVE RESOURCES

<p>Become a partner</p>  <p>Donate to become our partner for our community's most vulnerable children</p>	<p>Bingo & Cornament</p>  <p>Sponsor and/or attend a bingo event (spring) or our annual Cornament (fall)</p>	<p>Gala</p>  <p>Sponsor and/or attend our annual gala (the first weekend in March at Margaritaville Lake Conroe Resort)</p>	<p>Shop our wish lists</p>  <p>Shop our Amazon wish lists for the most commonly requested items by our Advocates for children and families</p>	<p>Donate gift cards</p>  <p>Most requested gift cards by children and families: <i>Walmart</i> <i>Target</i> <i>Academy Sports + Outdoors</i> <i>Grocery stores</i></p>	<p>Corporate donations</p>  <p>Have your company donate, sponsor, and/or match employee gifts</p>
---	--	---	---	--	---







**CHILD
ADVOCATES**
OF MONTGOMERY COUNTY

Our Mission

To empower vulnerable children through volunteer advocacy and strengthen their family and community with education, so they can flourish in a safe, nurturing environment.

505 N. MAIN STREET | CONROE, TEXAS 77301
TEL 936.441.5437 | CHILDADVOCATESTEXAS.ORG